



6" x 4" x 15' Bucket Elevator



8" x 5" x 20' Bucket Elevator

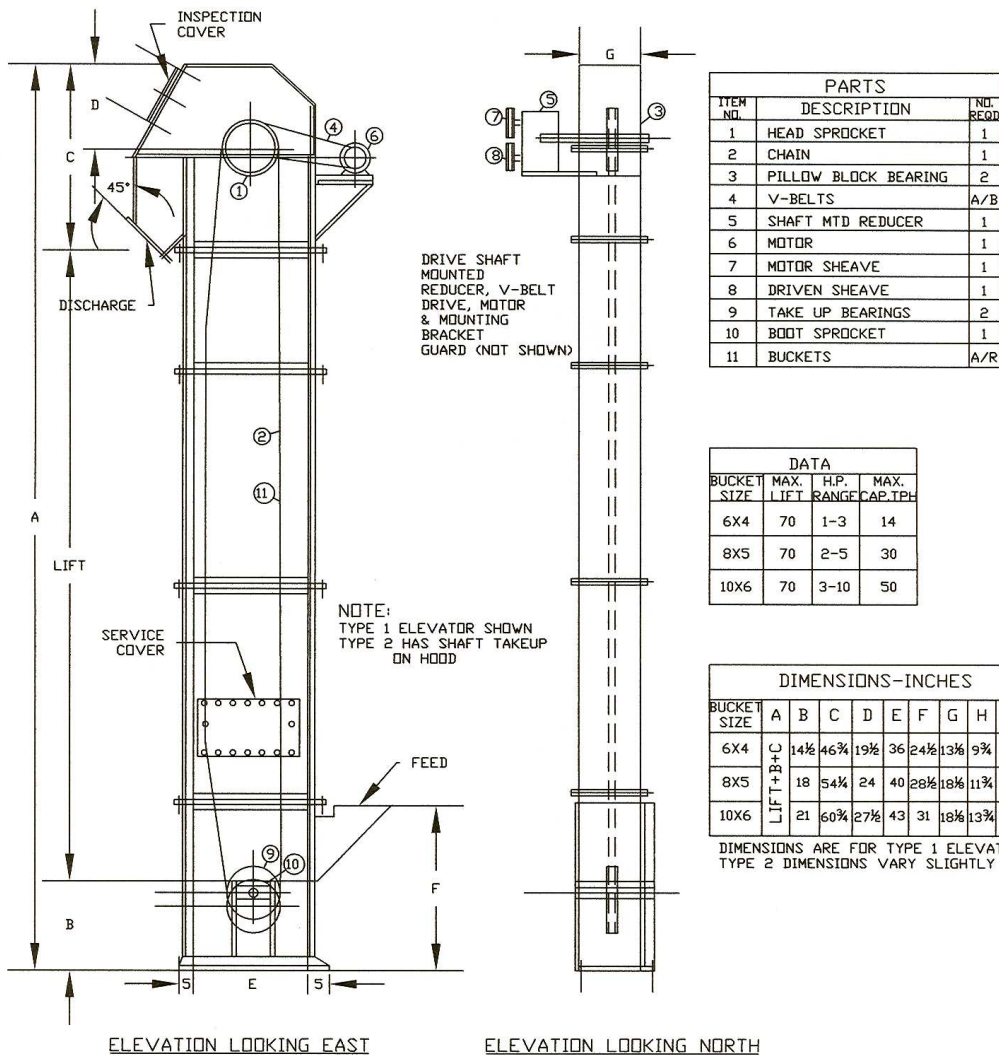
### Applications

Quinn Centrifugal Discharge Bucket Elevators are designed for service in the mineral, chemical, and other industries. They are designed to elevate "free-flowing" solids at rates up to 50 tons per hour (based on 100 lb cu ft material) with vertical lifts up to 70'. The units are ideal for pilot plant and small commercial size operations, specifically in the feed, size reduction, product, and reagent handling areas.

The major advantage is that they elevate material to suite process and storage requirements with a minimum of ground area requirement. This is extremely important due to the fact that *areas* available for pilot plant activities are usually minimal. The more compact the plant, the fewer operating personnel required. Also, it is easier to centralize operating controls, provide dust collections systems, etc.

Standard Quinn elevators are of the chain design to permit handling a wide variety of free-flowing solids with abrasive, dusty, high temperature, and other characteristics. Units are available in Type 1 and 2. Type 1 has foot shafts with screw-type takeups, is selected for a majority of applications involving free-flowing, fine or loose materials. Type 2 has the screw-type takeup at the head shaft for handling material that tends to pack or contains a high percentage of lumps.

(Dimensions and specifications on reverse side.)



**Specifications**

**Sizes:** As per above drawing.

**Housing:** Fabricated steel reinforced and sectionalized as necessary to suit the height. Sections are flanged, gasketed and bolted. Housing includes center section, boot and top hood assemblies. Bottom cleanout drawer is provided. Inspection doors are provided in the hood and lower section housing areas. Housing is of dust-tight construction with gaskets provided at flanged connections and felt seals around the shaft areas.

**Mechanism assembly:** Consists of heavy cast head and boot sprockets, mounted on oversize steel shafts carried in self-aligning sealed pillow block bearings mounted on supports positioned outside of the housing area. Boot shaft is provided with takeup assemblies.

**Drive:** Speed reduction is through a shaft mounted reducer (with backstop), V-belt drive, and suitable TEFC motor. Motor bracket and OSHA type drive guard are provided.

**Assembly:** Units are rustoleum primed and painted green enamel. Units to 40' length are shipped completely assembled.