



QPEC Laboratory Batch Rod Mill
With optional discharge stand



QPEC Ball/Rod Laboratory Batch Mill
Dual Roller Drives

Applications

Quinn offers laboratory batch rod and ball mill grinding units normally used for feed preparation in mineral, chemical, and industrial laboratories. Such preparation can be on a wet or dry basis. The charge range for the rod mill is 500 to 2000 grams and the ball mill 500 to 1500 grams based on 2.7 specific gravity material.

Feed preparation normally precedes flotation, gravity concentration, leaching, scrubbing, dissolving, and various other processes.

Grinding units are standard of mild steel; however, they are available with rubber lining or of stainless steel shell construction.

Advantages

Grinding units are designed 7-5/8" inside diameter. The rod mill has an inside length of 9-3/8" and the ball mill 6-3/4". Lifter bars simulate conventional grinding mill design.

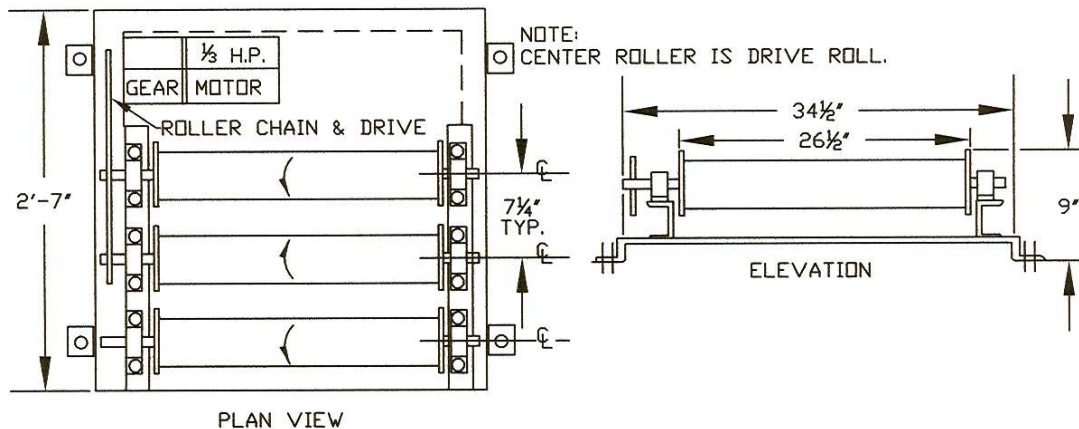
Mill speed is set at approximately 76% of critical. Speed can be altered by simply changing the number of teeth on the drive sprocket.

Grinding mill covers are easily removed and reinstalled. A rubber gasket eliminates leakage.

As shown, the 3-roll type drive unit is of adequate length to operate the rod and ball mill simultaneously. The Quinn roll drive unit can be used to operate other types of cylinders for leaching, blending, etc.

The drive unit is mounted on a rugged steel frame and designed for installation on a laboratory support table. A minimum of space is required.

(Dimensions and specifications on reverse side.)



Specifications

Rod and ball mills: Fabricated of steel with two machined riding surfaces. Removable cover with gasket, yoke, and locking handwheel. Lifter welded integral with shell section. Inside diameter 7-5/8". Inside rod mill length 9-3/8". Inside ball mill length 6-3/4".

Roll type drive unit: Standard unit consists of three seamless tubing rollers 27" long. Rolls are rubber covered and provided with retaining rings on each end.

Rolls are supported on sealed self-aligning bearings with locking collars. Center roll is roller chain driven at approximately 76% of critical speed. An OSHA type drive guard is included.

Power is from a 1/3 hp, I ph, 60 Hertz, 115/230 volt or 3 ph, 60 Hertz, 230/460 volt T. E. gearmotor. Other electrical characteristics also available.

Unit is cleaned, primed with rustoleum, and painted with green enamel. It is completely assembled for shipment.

Optional: Units are available for corrosive service of rubber lined or stainless steel construction.